

無限 MUGEN CR-Z

Hybrid Advanced Sports



無限 **MUGEN**

Hybrid Advanced Sports

Ambition, combining the hybrid vehicles with sporty feeling, that MUGEN had accomplished has evolved furthermore and been embodied as MUGEN CR-Z. MUGEN CR-Z developed based on our experience of the motor sport activities and tuning parts development has opened the door of the new era for "Tuning of the hybrid vehicle."

CR-Z





Photo left : α Premium white pearl
Wheels : GP/Bronze

Photo right : α Premium white pearl
Wheels : GP/Gun metallic

>>> Sports Exhaust System



Owing to its straight structure, the sports exhaust system gains excellent exhaust efficiency along with effective sound deadening properties. Power, feeling, and sound are all optimized through dyno testing. A delta-shape finisher is used to enhance air flow around the silencer. Suitable for use with either MUGEN or OEM rear under spoiler. All stainless construction and certified by JASMA

[1.0h] 18000-XLT-K0S0

>>> Hi-Performance Air Cleaner & Box



Interchangeable with the OEM air cleaner box. Extensive dyno testing allowed the filter material and air-box shape to be optimized in order to aid induction air flow. Lightweight carbon fibre is used for the air box cover. A filter maintenance kit, sold separately, allows the filter to be used repeatedly. Comes with a MUGEN logo sticker



[1.4h] 17200-XLT-K0S0

Enlarged picture of the air box cover

Filter Maintenance Kit

Exclusive filter washer (spray) and filter oil (aerosol) as a set. 90000-YZ0-5000-99

Filter Element

Replacement filter element specially designed for the MUGEN air cleaner & box

[0.1h] 17220-XLT-0000

Performance

>>> Hi-Performance Oil Element

The filtering area and position of the filtering material are optimized in order to eliminate sludge deposits as much as possible, and also contributes to the 10% reduction of the pressure loss experienced when compared with the OEM oil element.

Owing to the "Y" shape cross section of the newly developed filtering fibres, sludge deposits are prevented from reentering into the system, reducing friction on the inner surfaces.

Acrylic rubber (gasket) and silicon rubber (anti-drain), assist the oil filter element in resisting the high temperature conditions of the VTEC engine.



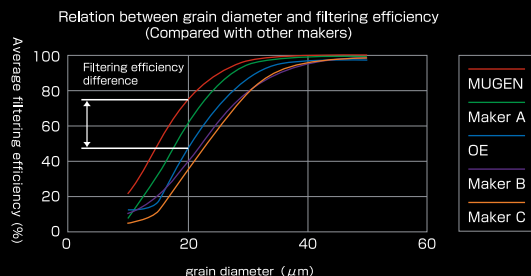
[0.3h]

15400-XK5B-0000

Sludge (Foreign substances)



Enlarged picture of the filter element



[Chart shows relation between grain diameter and filtering efficiency]
Chart above shows the relation between grain diameter and filtering efficiency.
Filtering efficiency improves by 36% compared with that of OEM filter.

>>> Hi-Pressure Radiator Cap

Opening valve pressure is increased to work effectively in high-load operation such as circuit driving.

Opening valve pressure: 1.3kgf/cm² [127kPa]
(OE:1.1kgf/cm²[108kPa])

19045-XGER-0000



>>> Engine Treatment Oil MT105

Major ingredient, MODTC (Organic molybdenum) is quickly penetrated into the metal friction surface and makes a smooth metal surface by forming strong lubricating surface which in turn reduces the friction resistance and engine noise, and minimizes the loss of engine power as a result.

Amount: 200ml

90000-YZ0-105



Braking

Hi-Performance Brake System

To secure the same or better quality as the OEM brake system, extensive testing was carried out both on the dyno and at circuits.

>>> Brake Pad --Type Sport--



FRONT



REAR

[FRONT] [0.7h] 45022-XLT-K000

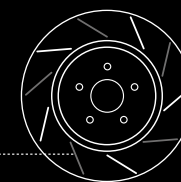
[REAR] [0.7h] 43022-XLT-K000

>>> Brake Rotor

5 slits (10 in total on both sides), 1.0mm deep engraved on the brake rotor surface not only eliminates the high-temperature gas between pads and rotors to counteract fade characteristics when driving but ensures the surface is always clean. Surfaces are also covered with a special rust-inhibiting coating, offering high durability and a fine appearance. Right and left fronts and rears per each set.

[FRONT] [0.8h] 45250-XLT-K0S0

[REAR] [0.8h] 43250-XLT-K0S0



*Grooves on the backside

The width, depth and angle of these grooves were determined through tests to find the correct balance between coefficient of friction and brake performance. These grooves are also milled asymmetrically front to rear to minimize any unpleasant brake judder.



>>> Micromesh Brake Line

The outer braid adopted by MUGEN's micromesh brake lines consists of seven very fine wires woven together to produce a single steel wire with a diameter of 0.21mm which in turn is woven with other single wires to produce a wire mesh with significantly improved flexibility and durability. MUGEN's brake line reinforced with stainless steel wire mesh was the first such wire mesh to meet the Federal Motor Vehicle Safety Standard No. 106 of the U.S. (FMVSS). 4 per a set

[1.1h] 46400-XLT-K0S0

>>> Hi-Performance Brake Fluid

High performance brake fluid newly developed exclusively for Honda vehicles, with a dry boiling point of 327°C and wet boiling point at 202°C, which significantly exceeds BF5 Standard, and contributes to excellent driving performance at high speeds. Boiling point drop caused by moisture absorption barely happens therefore maintaining a high boiling point, resulting in longer life of the product.

90000-XYB-B000



>>> Reserve Tank Cover

Brake and clutch reservoir tank covers that absorb leakage caused by various factors. Aramid fire-resistant fiber is adopted to be safe, and also with a fashionable iconic MUGEN-branded appearance.

[0.1h] 90000-YZ7-0054

Handling

>>> Aluminum Wheel GP



GUN METALLIC 17x7JJ Inset48
[0.7h] 42700-XXA-770G-48



BRONZE 17x7JJ Inset48
[0.7h] 42700-XXA-770B-48

The 7-spoke "GP" forged wheel, designed for driving performance, is MUGEN's flagship wheel. Although a highly-complex design, by using a metal-spinning process weight-saving and high rigidity are achieved. A weight saving of 1 kg, compared with the 16" diameter OEM wheels, enables a decrease in un-sprung weight, helping to accomplish high driving performance and direct feeling on the road. Hub fitting design exclusive to Honda cars was adopted. Two colour options, Gun Metallic and Bronze, are available. Exclusive wheel nuts are sold separately - OEM wheel nuts must not be used with these wheels. Recommended tyre size: 205/45R17.

GP

Unique spoke configuration design for both weight-saving and rigidity



Area around the center caps was made thinner to reduce the total weight.



>>> Aluminum Wheel NR



BLACK METAL COAT 17x7JJ Inset48
[0.7h] 42700-NR5-770C-48

One piece cast wheel featuring 10 spokes with excellent rigidity. The NR wheel also utilizes the hub fit design, which is exclusive to Honda vehicles. Available in Black Metal Coat, Mirror Face, or Silver. Please note; OEM wheel nuts must not be used with these wheels, special wheel nuts are sold separately. Recommended tyre size: 205/45R17.



MIRROR FACE 17x7JJ Inset48
[0.7h] 42700-NR5-770M-48



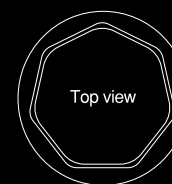
SILVER 17x7JJ Inset48
[0.7h] 42700-NR5-770S-48

>>> HEPTAGON [#7] Nut Set



08181-XXB-K0S0-BL

Made from chrome vanadium (28BCRVM), which is noted for its torsional stiffness these heptagonal (7-sided) wheel nuts require a special socket tool (supplied) for easy removal, while providing security from theft. Set consists of 20 tapered theft-resistant wheel nuts (L=34) and special socket tool for removal. Colour - Black.



Top view

>>> Wheel Nut & Lock Set



SILVER



BLACK

16 wheel nuts (taper type) and 4 lock nuts per set. Silver and Black colours are available.

SILVER 08181-MZ3-K0S0-S
BLACK 08181-MZ3-K0S0-BL

>>> 5ADJ. Suspension



Well-balanced sports suspension with high-speed stability, comfort, and tuning performance. Due to the 5 position adjustable system, drivers can select the suspension damping level to suit all conditions from sports to street driving. Front (φ 32) and rear (φ 30) large pistons are adopted to generate precise and stable damping force at all speed ranges, including ultra low speed damper movement. Suspension is developed individually to take into account the weight differential between the 6MT and CVT transmissions. All 4 dampers and springs are included in the set. Vehicle's height is reduced by 15 to 20mm.

6MT [3.0h] 50000-XLT-K0S0 CVT [3.0h] 50000-XLT-K1S0

INTERIOR

>>> Sports Mat

2 each of the front and rear per a set

[0.3h] 08P15-XLT-K1S0



Newly designed mats have been developed to take into consideration the unique characteristics of CR-Z. The front of the mat is Black with a Red edge, giving a sports-oriented impression. Under the embroidered MUGEN logo, three coloured bands depicting the corporate colours of MUGEN are also embroidered. Highly durable hard-wearing nylon is used on the front part of the mat, while on the rear, polyester material and special spikes help to keep the mat in position during use. The mats also feature durable and non-slip heel pads. 2 or 4 mats per set are available.



[2]

MUGEN logo is embroidered separately, which helps improve the texture.

2 of the front per a set

[0.2h] 08P15-XLT-K0S0



Highly durable heel pads are adopted for both driver and passenger mats and shaped into a special design to prevent slippage.



Mat for the driver is equipped with two locks to prevent sliding. Simple lock action for removing mat improves convenience when cleaning.



MUGEN collar tags are stitched on the rear floor mat.



Edges are over-locked with Red thread, which highlights the sports-oriented features in the Black base mat.



The under side is covered with special spikes preventing the mat from sliding away and which can contribute to sporty driving.

>>> Shift Knob



Machined shift knob
Material: Aluminium
Diameter: ϕ 50 mm
Shift pattern: Laser etched

[6MT] [0.1h] 54102-XLT-K0S0

>>> Carbon Room Mirror Cover



Enlarged picture of the interior mirror cover surface

[0.2h] 76450-XLT-K0S0

Dynamically designed dry carbon room mirror cover with printed MUGEN logo.

>>> Assist Meters



【Illumination】

When the side lights and head lights are turned on, the figures and scales in the panel board are illuminated in Green and the needles are illuminated in Red.



【Peak Mode】

The peak value of each meter during vehicle running is indicated by the respective needle.



【Warning mode】

Whenever a reading from the engine sensors exceeds the user pre-set value, the warning LED in the panel board lights up (in case of oil pressure gauge, if the value is less than the set value, then the warning LED lights up). A useful replay mode in which each meter simultaneously records and reproduces the running condition for a maximum of 40 seconds is available.



Control unit

[3.0h] 78200-XLT-K0S0

Water temperature, oil temperature, and oil pressure meters are all contained in the meter cowl exclusively designed for CR-Z.

The shape and position of the cowl is designed and arranged so as not to obscure the driver's line of sight, but at the same time to be easily viewed whilst driving.

Meter diameter is ϕ 60mm

Includes sensors, special harness, and the control unit.

GFRP housing; colour of unit to match OEM meter panel

>>> Carbon Shift Knob



RED



BLACK

Aluminum spherical shift knob covered with dry carbon
Its size (φ50) and weight were determined considering driver's comfort.
Two colors, red and black are available.



[RED] 54102-XLT-K1S0-RD
[BLACK] 54102-XLT-K1S0-BK

[6MT] [0.1h] 54102-XLT-K0S0

>>> EQUIPMENT

>>> Carbon Mirror Cover

Door mirror cover made of dry carbon exclusively designed for CR-Z. Mirror face is covered with UV clear coating which prevents the mirror from deterioration including color fade. Comes with MUGEN logo

[0.5h] 76205-XLT-K0S0



Enlarged picture of the mirror cover surface

>>> MUGEN Metal Logo Emblem

High grade three dimensional Chrome-plated metal emblem •Available in white or Black. Size: 20 (long) x 165 (width) mm



Chrome plated / White [0.4h] 90000-YZ8-DV62-WH

Recommended colour combination: Premium White P



Chrome plated / Black [0.4h] 90000-YZ8-DV62-BK

Recommended colour combinations: Dark Pewter M, Brilliant Orange M, Horizon Turquoise P, Crystal Black P, Storm Silver M, Milano Red

>>> Hydrophilic Mirror

Multi-layer coated, blue colour mirror which diminishes ultraviolet light and sun light.

When driving, this mirror eliminates dangerous rearview mirror glare and reduces eye fatigue, making it safer for drivers. Hydrophilic coated mirrors developed by photocatalyst technology can clear driver's vision while driving in rain.

The modified curvature of the mirror (RH side - 1000R, LH side - 600R), allows a wider range of view for the driver.

Supplied as a direct replacement for the OEM mirror glasses, and complete with laser-printed MUGEN logo.

Please note; the heat demisting function of the mirrors will be lost due to installation of these mirrors.



[0.3h] 76200-XLT-K0S0



>>> Number Plate Bolts

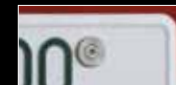
High grade machined number plate bolt, comprising of stainless steel head (washer collar) and bolt.

Laser printed with MUGEN POWER. Hexagonal socket-head is adopted as a protection against theft.

Head size: φ20 t=3mm. 2 bolts per a set

[0.1h] 75700-XG8-K0S0

Installation example picture



>>> Oil Filler Cap

Material: Machined aluminium Finish: Alumite coated
5 Colours: Gold, Silver, Black, Red, and Blue



[0.1h] 15610-XG8-K1S0-BL

[CHAMPAGNE GOLD] 15610-XG8-K1S0-CG [SILVER] 15610-XG8-K1S0-S

[RED] 15610-XG8-K1S0-R [BLUE] 15610-XG8-K1S0-BU [BLACK]

>>> MUGEN Titanium Emblem

Characteristics of titanium are considered to be machined and burned to get typical titanium gradation color. Size: 15 x 110 (mm)



[0.1h] 90000-XYE-301A

Aero Dynamics



Photo α Premium white pearl
Wheels: GP/Gun metallic
Grille illumination is on.

Colour Variation	
Honda Colour Code	MUGEN Colour Code
Dark Pewter M (NH773M)	Milano Red (R81)
Crystal Black P (NH731P)	Horizon Turquoise P (BG57P)
Premium White P (NH624P)	Premium Yellow P II (Y70P)
Storm Silver M (NH642M)	Unpainted

S Styling Set Front under spoiler, side spoiler (x2), and rear under spoiler per set

Pre-coloured (7 colours) 2.5h 61000-XLT-K0S0-* * (MUGEN colour code)
Unpainted 2.5h 61000-XLT-K0S0-ZZ

S >>> Front Under Spoiler

To be attached on the lower part of the bumper, compatible with the standard OE fog light. Vacuum-formed PPE material.



Without foglight

Pre-coloured (7 colours) 0.5h 71110-XLT-K0S0-* *
Unpainted 0.5h 71110-XLT-K0S0-ZZ

S >>> Side Spoiler

Exchangeable with the OEM side sill garnish, Vacuum-formed PPE

Pre-coloured (7 colours) 1.0h 70219-XLT-K0S0-* *
Unpainted 1.0h 70219-XLT-K0S0-ZZ

S >>> Rear Under Spoiler

Designed to be attached to the lower part of the rear bumper. Removal of the OEM diffuser is required. Diffuser part is separate and painted Gloss Black. Vacuum-formed PPE

Pre-coloured (7 colours) 1.0h 84111-XLT-K0S0-* *
Unpainted 1.0h 84111-XLT-K0S0-ZZ

OPTION LED Rear Fog Light

The part can add an impression of racing car silhouette to the rear appearance. LED rear fog light with high visibility even in a bad weather is adopted. "On" and "Off" switch is installed on the inner panel easily accessible to driver. It also can be installed with CR-Z already installed with MUGEN rear spoiler.



Vehicles with LED Rear Fog light



Vehicles with no LED Rear Fog light

1.5h 34400-XLT-K0S0

>>> Front Sports Grille

The design is based on the letter H and is a direct replacement for the OEM grille. Comes with the MUGEN metal emblem. Vacuum-formed PPE material. LED grille illumination and carbon number plate garnish are available as options to complement this product.



Vehicles with no grille illumination

Gloss Black finish
1.0h 75100-XLT-K0S0

OPTION Grille Illumination

Grille illumination with high brightness LED. Non-switchable "always-on", with a bright white colour, working in conjunction with driving lights. Optional part for the MUGEN front grille.



0.8h
33600-XLT-K0S0

>>> Rear Wing

Mounted on the rear tailgate and comes with MUGEN metal logo emblem and tailgate opening stays. Blow-moulded ABS construction.

Pre-coloured (7 colours) 1.2h 84112-XLT-K0S0-* *
Unpainted 1.2h 84112-XLT-K0S0-ZZ

www.mugen-power.com/automobile/products/CR-Z/

無限 MUGEN

M-TEC Co., LTD. 2-15-11 Hizaoricho Asakashi Saitamaken 351-8586 JAPAN 048-462-3131

<http://www.mugen-power.com>